



Wrocław  
University  
of Science  
and Technology



Co-funded by  
the European Union

3e<sup>+</sup>

# PROGRAMMES FOR INCOMING STUDENTS

Summer  
School

BIP

#wroclawtech

[crm.pwr.edu.pl](http://crm.pwr.edu.pl)



# GENERAL INFORMATION



## Courses offered in English

You have to take most of the courses from the faculty you were nominated for and then you are allowed to take a few courses from another faculties. If you have any questions regarding courses or syllabuses please contact our **Faculty Coordinator**. For all the issues concerning your choice and content of courses, they will be happy to assist you

[wroclaw.tech/exchangeoffer](mailto:wroclaw.tech/exchangeoffer)



## Faculty Departments and Coordinators



W1	Architecture
W2	Civil Engineering
W3	Chemistry
W4N	Information and Communication Technology
W5	Electrical Engineering
W6	Geoengineering, Mining and Geology
W7	Environmental Engineering
W8N	Management
W9	Mechanical and Power Engineering
W10	Mechanical Engineering
W11	Fundamental Problems of Technology
W12N	Electronics, Photonics and Microsystems
W13	Pure and Applied Mathematics
W14	Faculty of Medicine



## Deadlines for applying for Erasmus+, Exchange, Visiting Students Programmes

	For nomination	
	Winter semester and whole academic year	May, 1st
	Summer semester	November, 1st

For submitting documents	
Winter semester and whole academic year	May, 15th
Summer semester	November, 15th
Prolongation for summer semester	November, 15th

# MOBILITY OFFERS



## Visiting Student programme

dedicated to students who want to study at Wrocław Tech for one or two semesters. The programme is on a paid basis.

Check more information at:

[wroclaw.tech/visitingstudent](http://wroclaw.tech/visitingstudent)



## Short mobilities (BIP/Summer School)

### Blended Intensive

**Programmes** are short

programs of physical education, teaching and training for students (5-30 days) combined with a mandatory virtual phase (internet collaborative scientific exchange) of indefinite duration; if possible, physical activity should take place at a foreign partner university or specifically at an institution related to the university

Check more info at: [wroclaw.tech/bip](http://wroclaw.tech/bip)



## Erasmus+KA131, KA171 mobilities

Within these programmes, students can take part in international mobilities

for studies or implement educational projects.

Wrocław Tech has **650 international agreements** with non/European universities.

## Exchange Student programme



International agreements are signed at the faculties level - please check if the agreement concerns the faculty in which you are interested.



## Summer School

Empower students to unlock their leadership potential, develop essential skills, and cultivate a global perspective during summer schools.

Check out our flagship summer programme 3E+ or contact us for bespoke courses [event@pwr.edu.pl](mailto:event@pwr.edu.pl)  
More information can be found: [summerschools.pwr.edu.pl](http://summerschools.pwr.edu.pl)

## REQUIRED DOCUMENTS

### For all programmes:

- Application Form\*
- Learning Agreement\* (accepted by the home and host university)
- Transcript of Records (stamped by home university)
- Copy of Certificate of Language Competence (English B2 according to CEFR)\*\*
- Copy of national ID (for EU citizens) or passport
- Proof of medical insurance

\* filled in documents can be downloaded from the IRC system \*\*level B2 (sending university decides which certificate is applicable)

### And:

- Motivation letter (only for Erasmus+ KA171, traineeship)
- Recommendation letter (only for Erasmus+ KA171)
- Proof of personal insurance (only for Exchange, Visiting Students)
- Certificate of enrolment at home university (only for Visiting Students)
- Nomination from home university sent directly to us (only for traineeship)
- Proof of decision of your acceptance at Wrocław Tech (only for traineeship)

(for Erasmus+KA131,KA171,traineeship, Exchange and Visiting Students)

# USEFUL INFORMATION

## Health insurance

Proof of Health Insurance is compulsory



## Additional guidance

Get familiar with helpful information



## Residency in Poland

Visa required for non - EU citizens



Registration for EU-citizens in the Governor's Office



## Additional Information

Additional Courses (language offer, Physical Education, Polish History and Culture etc)



Academic Calendar Winter semester period: beginning of October - end of February  
Summer semester period: end of February/beginning of March - half of July



## Accommodation

Our dormitories located at Wittinga campus



Application for a dormitory in the IRC system  
Double rooms; approx. cost EUR 200/month/person  
Located 20' walking distance from the campus



# WROCLAW TECH

**Wrocław Tech** stands as one of the leading scientific and educational institution in Poland, continuously improving its global ranking among technical universities. Established in 1945, Wrocław Tech collaborates with over **130** institutions and hosts a diverse student body of around **1,400** from over **60** countries, contributing to a total student population of **21,000**. Proudly boasting extensive facilities, including **594** didactic and accredited labs, **522** research labs, and **467** lecture halls, the university fosters a vibrant academic environment with **193** scientific circles, **29** student organizations, and **21** cultural agencies. Wrocław Tech's excellence in teaching and research has contributed to Wrocław's prominence as Poland's computer science hub, attracting partnerships with national and international companies. Students benefit from a European-standard education, diverse specializations, and opportunities for impactful research in fields like nanotechnology and biotechnology, gaining valuable technical expertise and EU-recognized degrees.



## WROCLAW - A GREAT PLACE TO BE

Wrocław, Poland's third-largest city with a population exceeding 890,000, stands out as an excellent study destination. Renowned for its vibrant atmosphere, extensive job opportunities, and rich academic landscape, Wrocław caters to students' diverse needs with its abundant cultural and entertainment offerings. The city's stunning architecture, expansive green spaces, and unique setting on the Odra River—spanning 12 islands interconnected by over 100 bridges—add to its charm. Serving as the administrative, educational, business, and cultural hub of the Lower Silesia region, Wrocław boasts a storied history and is strategically located near the borders of Germany and the Czech Republic.

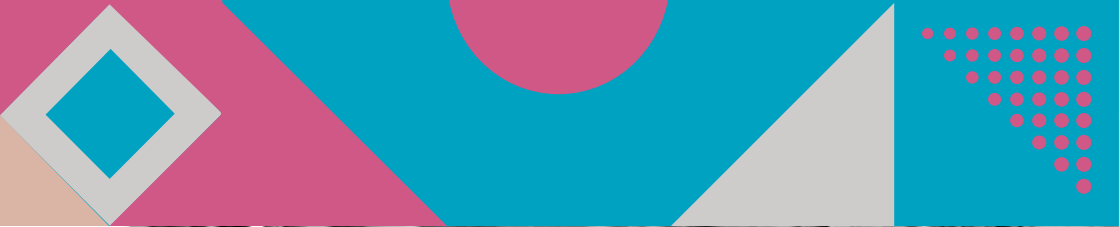
## CAMPUS

The university's academic center is around the main building along the Odra river. Recent key investments at Wrocław Tech include:

- **Bibliotech:** A modern IT-focused hub housing the Centre of Knowledge and Science and Technology Information.
- **Geocentrum:** A combined educational and research facility.
- **Technopolis:** Two advanced buildings serving as IT, Communication Technologies, and Education centers.

The Student Cultural Zone offers amenities like a multi-level car park, cafeteria, and conference rooms to meet student demands. The **"Polinka"** cable car uniquely links the main and Geocentrum campuses across the river. The university campus was placed among the 15 most beautiful in the world (according to the journal „The Huffington Post” and the American record company Disney). We invite you to take a virtual walk around Wrocław Tech campus and see everything for yourself: [wroclaw.tech/virtualtour](https://wroclaw.tech/virtualtour)





## WROCŁAW UNIVERSITY OF SCIENCE AND TECHNOLOGY

Address: 27 Wybrzeże Wyspiańskiego St.,  
50-370 Wrocław

Website: [pwr.edu.pl](http://pwr.edu.pl)

Erasmus Code: PL WROCLAW02

### CENTER FOR INTERNATIONAL RELATIONS

Address: 12 Na Grobli St., 50-421 Wrocław  
Building L3, first floor, room 1.20



[crm.pwr.edu.pl](http://crm.pwr.edu.pl)

Long-term mobilities  
(Erasmus+ KA131, KA171, Traineeship,  
Student Exchange & Visiting Student Programmes)

[erasmus@pwr.edu.pl](mailto:erasmus@pwr.edu.pl)

Short mobilities (BIP, Summer School)

[events@pwr.edu.pl](mailto:events@pwr.edu.pl)