

INTRO DAY

STUDENTS' UNION

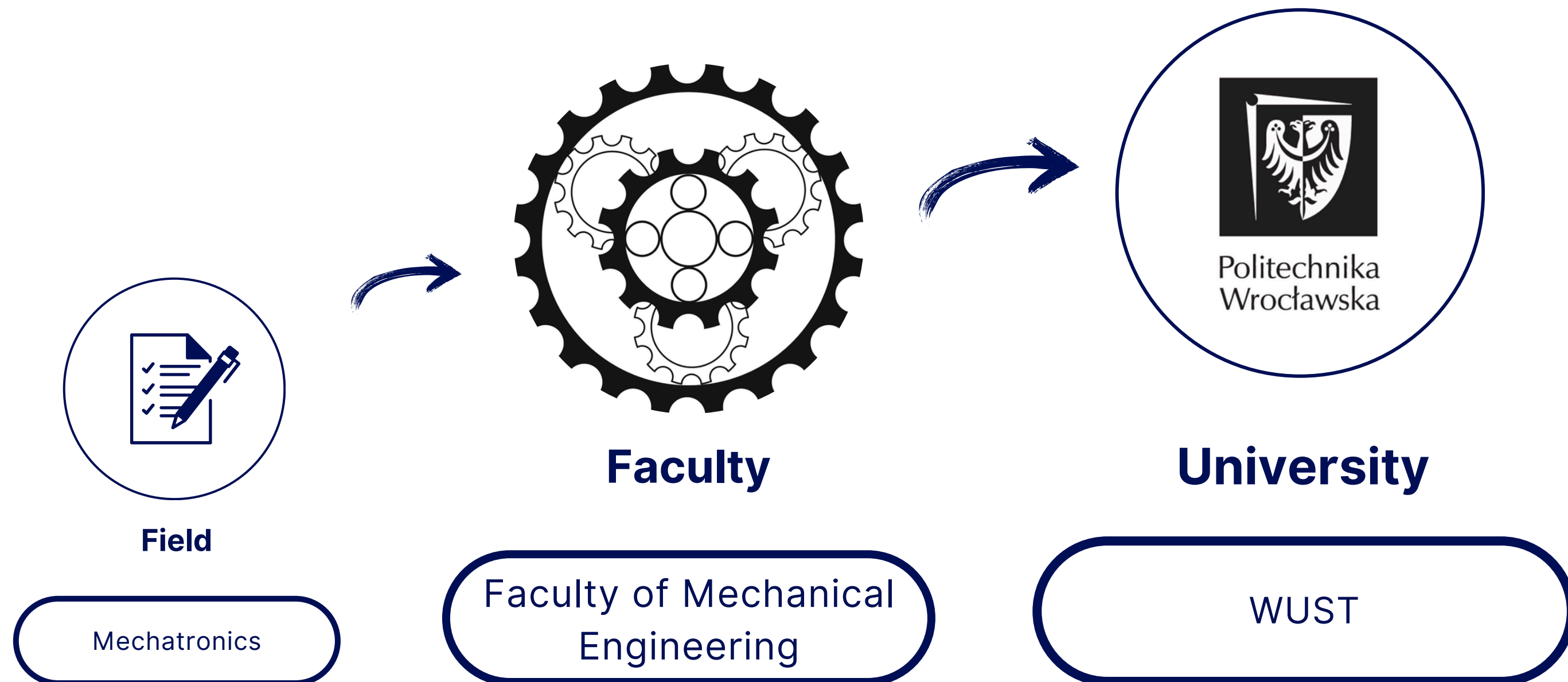
WROCLAW UNIVERSITY
OF SCIENCE AND TECHNOLOGY

UNIVERSITY IN NUMBERS

- 14 faculties
- 3 departments in other cities
- 14 scientific disciplines
- 70 diverse fields of study
- 36 programs conducted in foreign languages
- 116 modernly equipped research buildings
- and didactic facilities
- 193 scientific circles
- 29 student organizations
- 21 cultural agencies



UNIVERSITY STRUCTURE



STUDY REGULATIONS

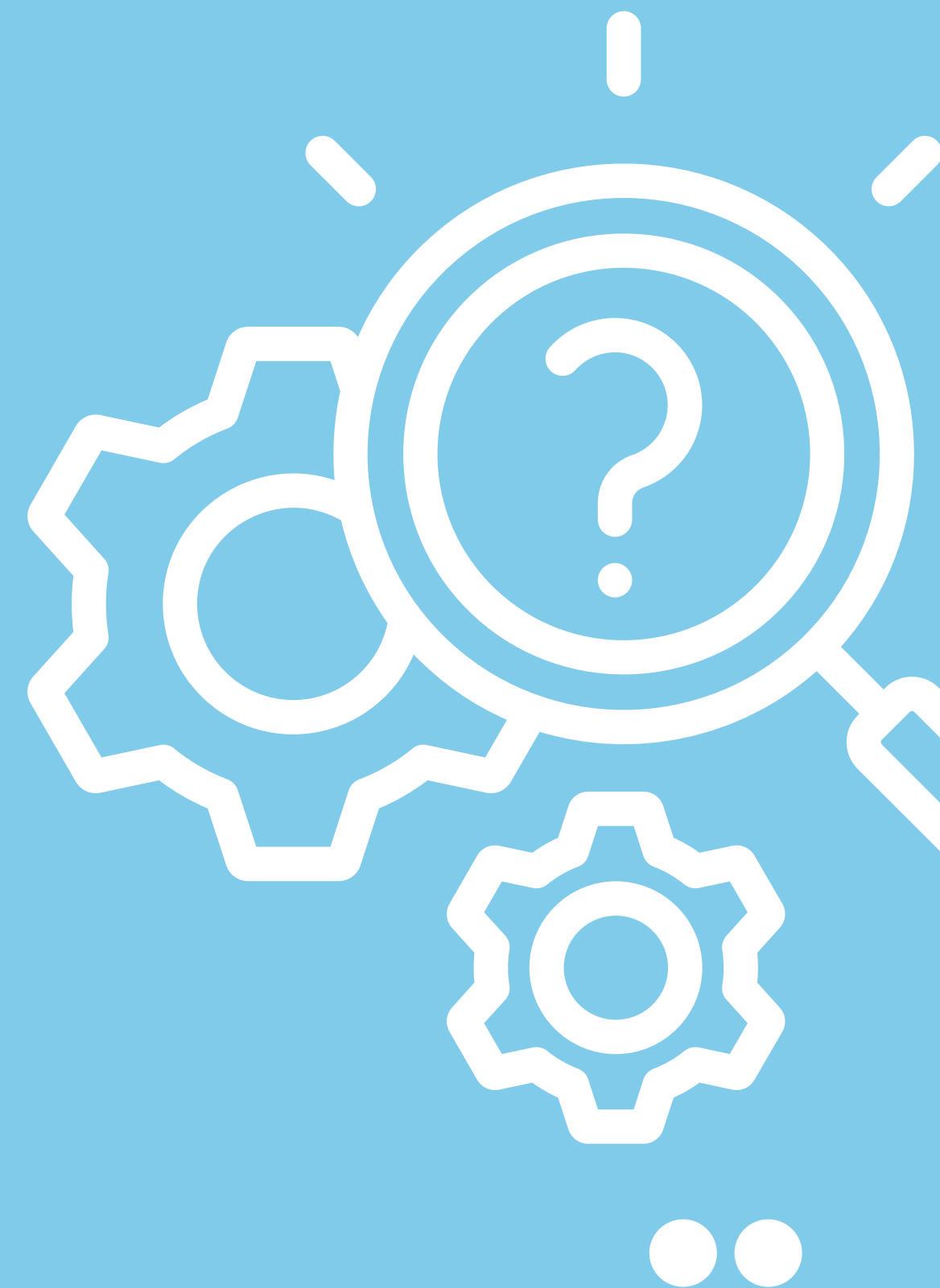
The Study Regulations is the basic document concerning every student and instructor at University. There you will find information regarding the rights and obligations of the student, how credits and examinations should be carried out, as well as many other important information.



To whom can I report the behavior of the instructor in violation of the rules and regulations?

To begin with, it is best to report it to the **Year Representative**, who will address the problem on your behalf to the university authorities.

YEAR REPRESENTATIVE



WHAT IS ECTS

ECTS points - a system of points introduced to measurably determine the Student's academic progress. Indicatively, one point corresponds to 25-30 hours of our total workload. Total every semester, following the program, one can obtain 30 ECTS (each course/subject has a certain number). **In the case of not passing classes, these credits count towards our “ECTS deficit.”**

As students, you cannot you can not exceed the specified limit of credits for a given semester.



COURSE OF STUDY

Faculty courses/subjects are classes that **take place only in a particular department**, often with a course-specific stream

General courses/subjects are classes such as foreign languages or sports. **Anyone can enroll in them (regardless of the faculty in which they study)**

Form of passing - during the first class the lecturer is required to present detailed rules for passing the class.

In addition, the form of credit can also be **checked in the plans of the of studies** posted on the Faculty website.

TYPES OF CLASSES



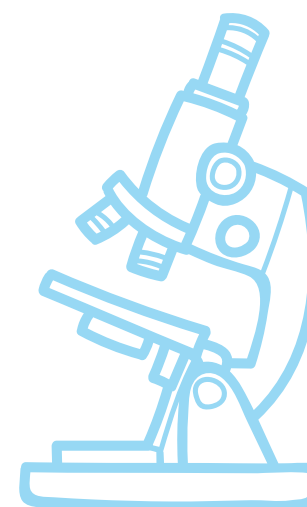
LECTURE

classes conducted with the participation of an academic teacher, in the first year mandatory



PRACTICALS

classes implemented in order to prepare for the exam and develop the lecture content, should include practical elements



LABORATORY

classes designed to develop skills using specialized equipment or software



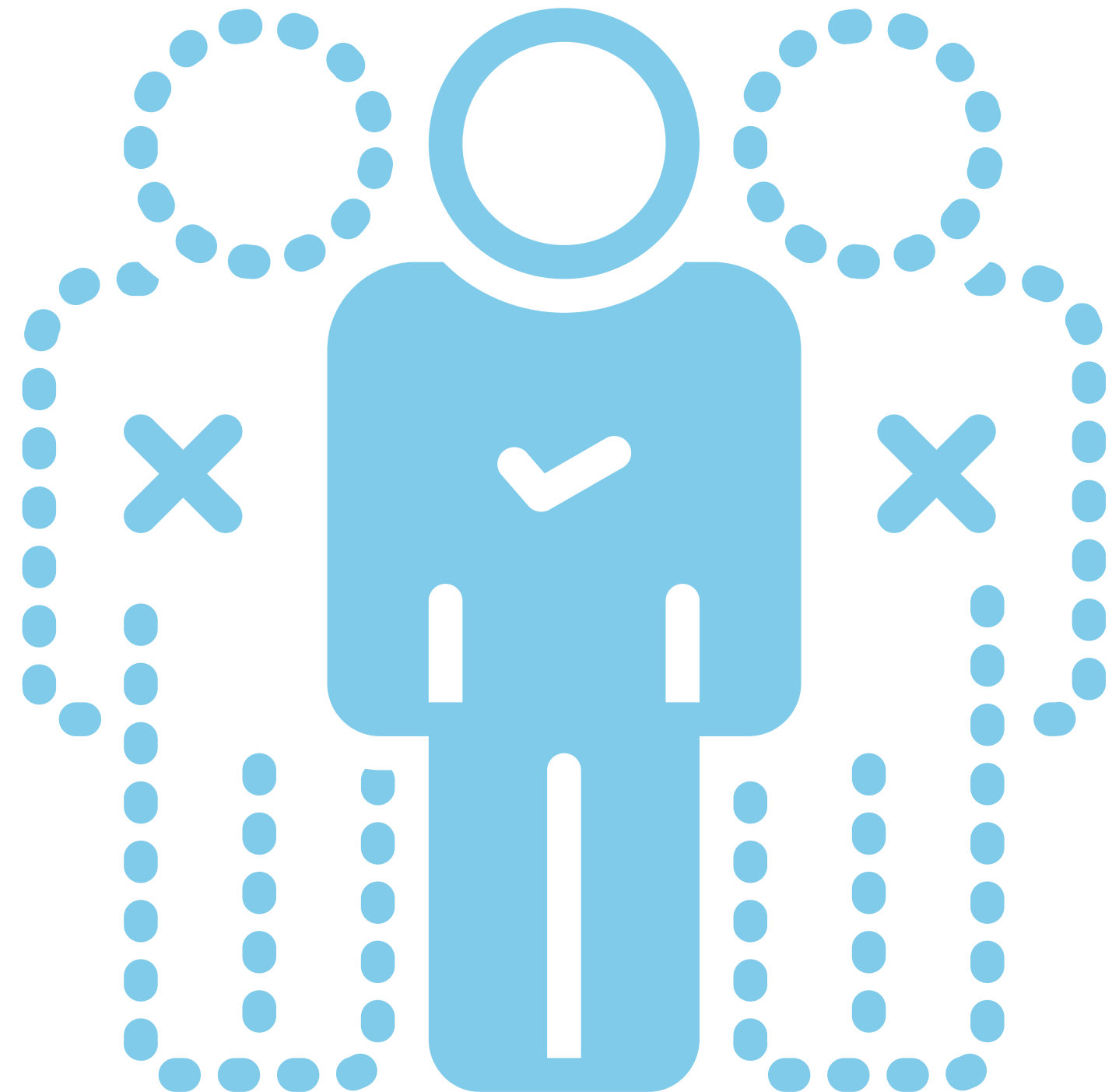
SEMINAR

classes with discussion on a selected topic



FIRST CLASS

During the first class of the semester, the lecturer must state the rules of attendance, including the limit of absences and their excuses.

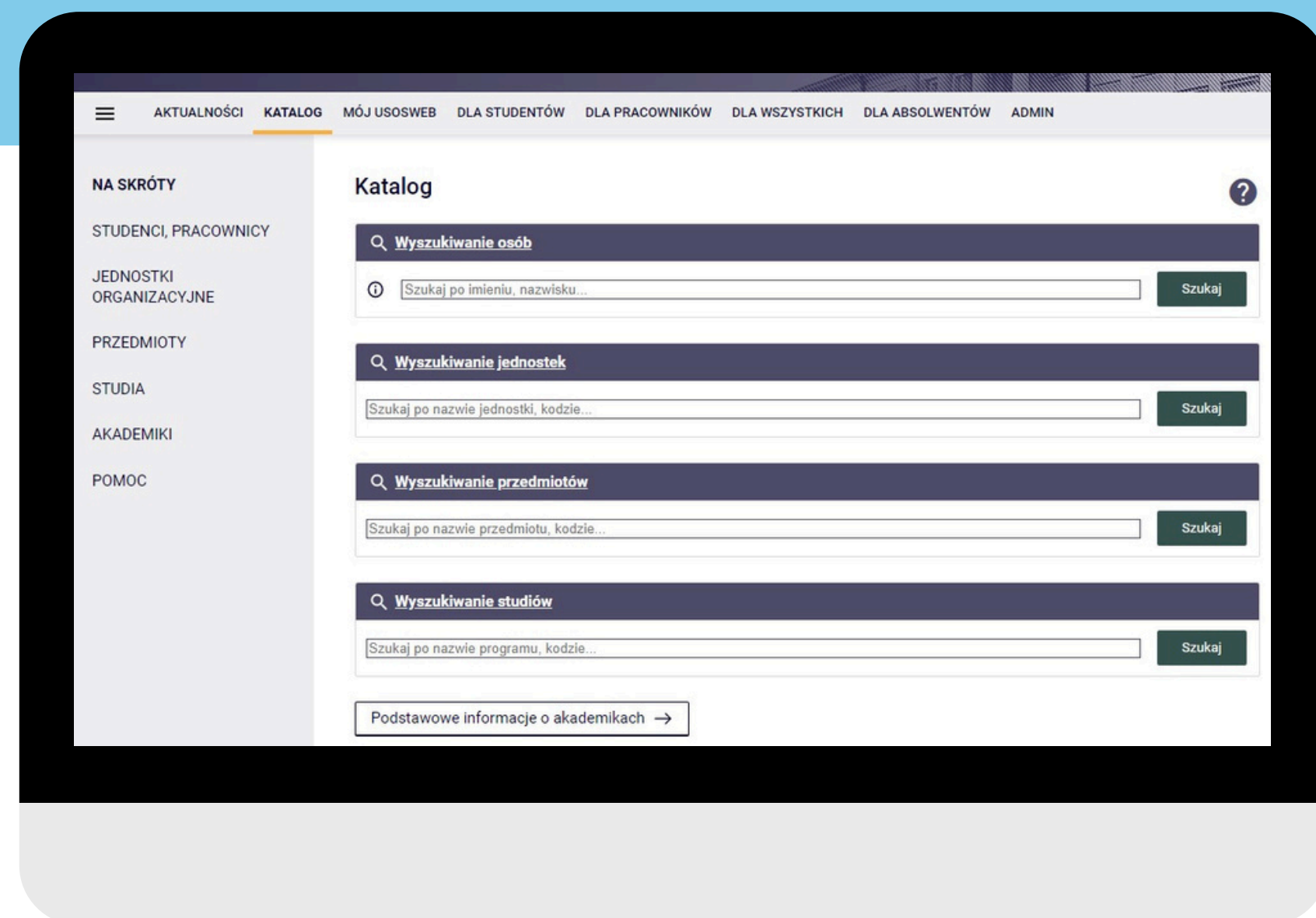


WHAT CAN YOU FIND IN USOS?

registration
for classes

exam grades

overview of
groups



EXAMS

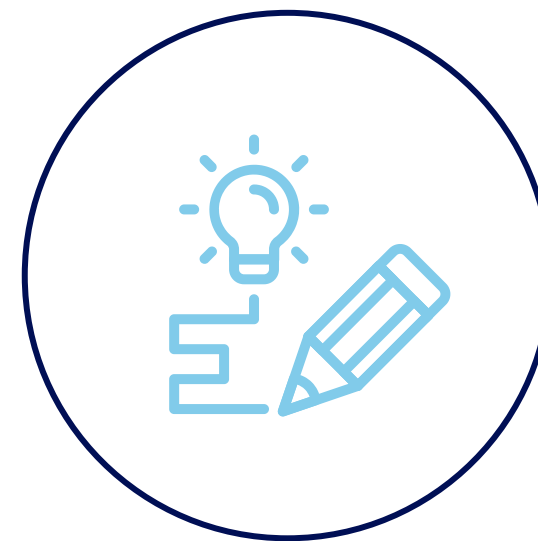
Exams are a form of verification of the acquired knowledge, skills and social competencies within the framework of a class, a stage of study or the entire study.



Written exam



Oral exam



Project realization



LEAVE

- **Health** - due to the state of health. The application should be submitted as soon as the reason arises
- For a **pregnant student** - assigned for the period until the day of birth of the child or, at the request of the student, until the end of the ongoing stage of study
- For a **student who is a parent**
- **Dean's leave** - should be submitted, in accordance with the schedule set by the dean no later than the third working day of the next stage of study; allocated for a maximum of two stages of study in the entire course of study
- **Professional** - realization of **internships** within the framework of international programs (carried out in accordance with agreements concluded by the Universities); assigned for a maximum of two stages of study in the entire course of study

OCCUPATIONAL HEALTH AND SAFETY TRAINING COURSE

Remember, all students who begin their studies at Wroclaw University of Science and Technology must undergo mandatory health and safety training.



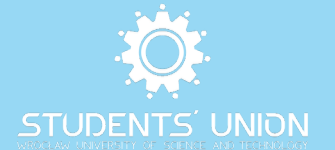
INTERNATIONAL HELPDESK

Supports foreign students when encountering problems.

Assistance is offered in several languages, such as English, German, Ukrainian or Spanish.

Contact: international@psrp.org.pl





The Students' Union is an organization representing the voice of the students of Wrocław University of Technology within the university's forum. In addition, we actively organizes a number of cultural events, initiates promotional campaigns and undertakes many other initiatives.



EVENTS

During the academic year, we organize many events, and some of them are organized internationally.

In previous years were held:

- Szlakiem Samorządowca - familiarization tours in our area, mountain walks, city tours
- International Dinner with ESN - during the Christmas season

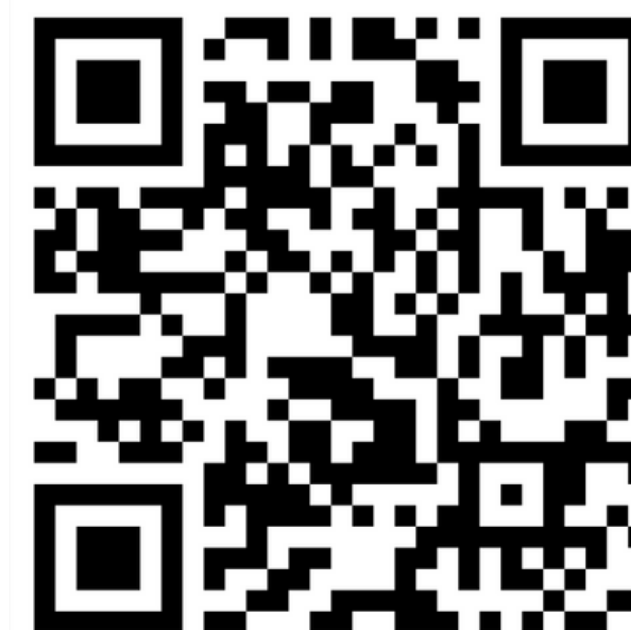




I <3 PWR - 1ST OCTOBER



NEW STUDENTS PARTY | 16-17.10





f Samorząd Studencki Politechniki Wrocławskiej

 samorzadpwr

 samorzadpwr

 www.samorzad.pwr.edu.pl

